

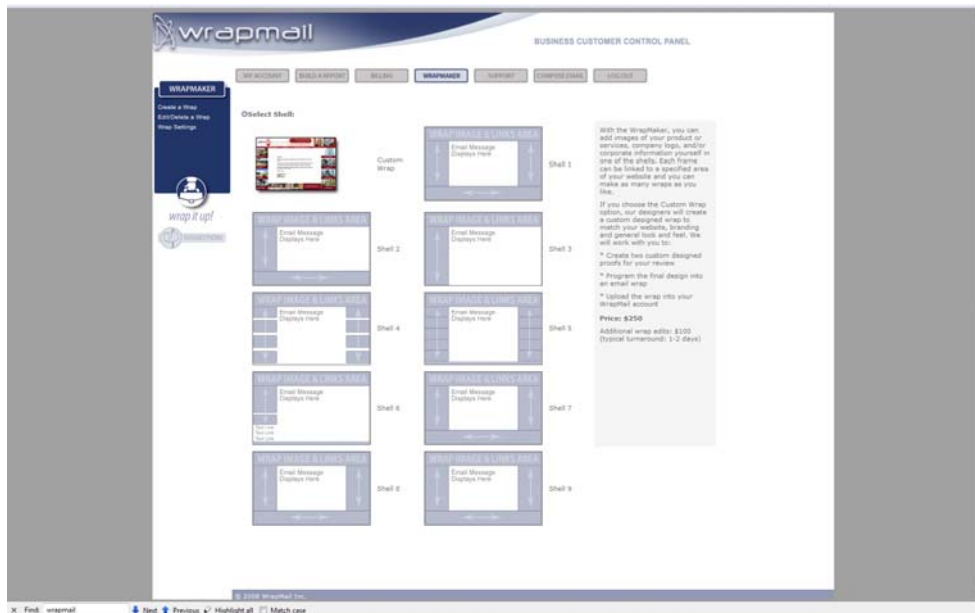
WrapMaker - system and interface for creating email html wraps

The WrapMaker is WrapMail's online tool that can be used to create wraps. The WrapMaker is accessible by logging in to the Customer Control Panel (CCP) from WrapMail's website – clicking on Business login (direct link: <https://customer.wrapmail.com/>)

PLEASE USE MICROSOFT INTERNET EXPLORER 7 OR LATER WHEN YOU CREATE WRAPS

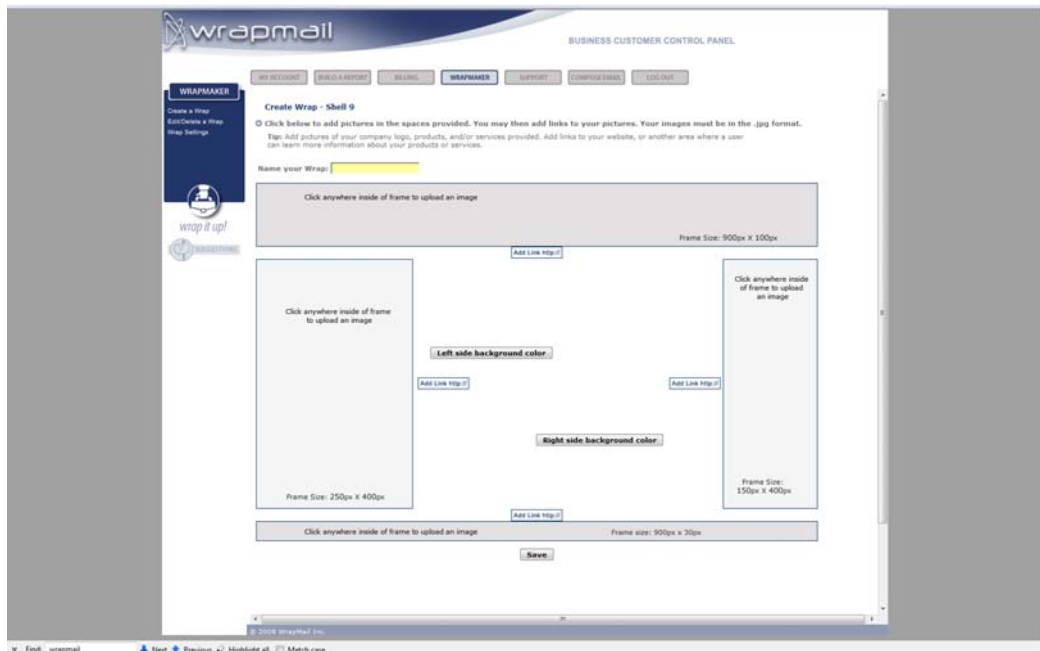
BEFORE YOU GO ANY FURTHER PLEASE NOTE THAT MAKING WRAPS WILL BE A LOT EASIER IF YOU HAVE EITHER PHOTOSHOP, MICROSOFT PAINT (WHICH COMES WITH EVERY PC AS PART OF WINDOWS) OR SIMILAR

When you click on WrapMaker this screen will show:



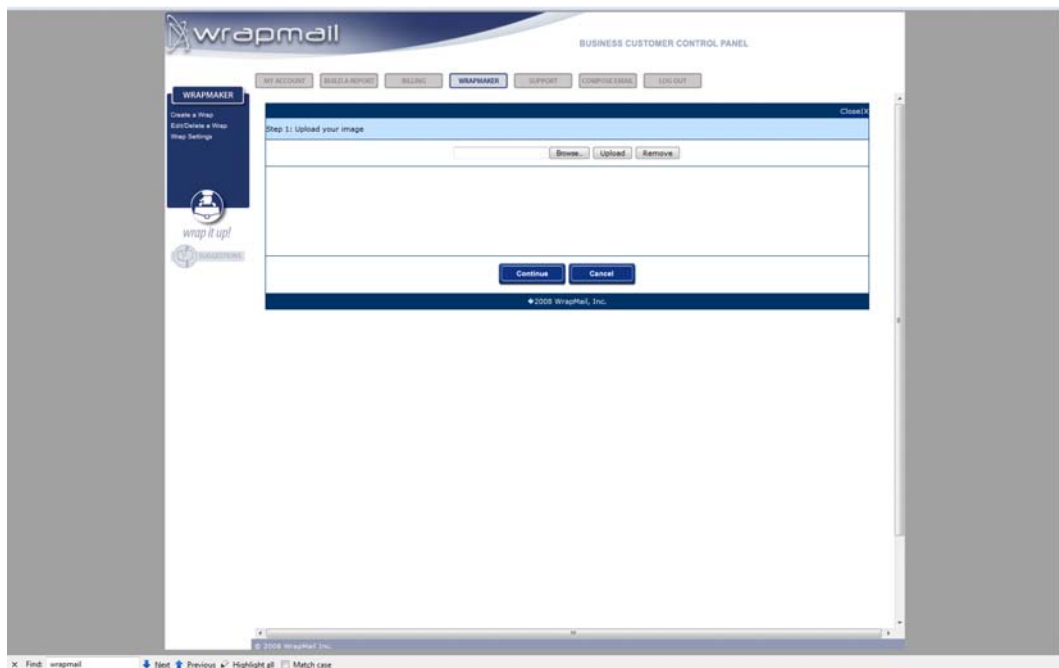
Notice the menu on the left, that's where you can click to CREATE, EDIT, CHANGE or administrate SETTINGS. To create a wrap you can simply click on any of the shells you see in the screen above.

Clicking on shell 9 will result in this picture on your screen:



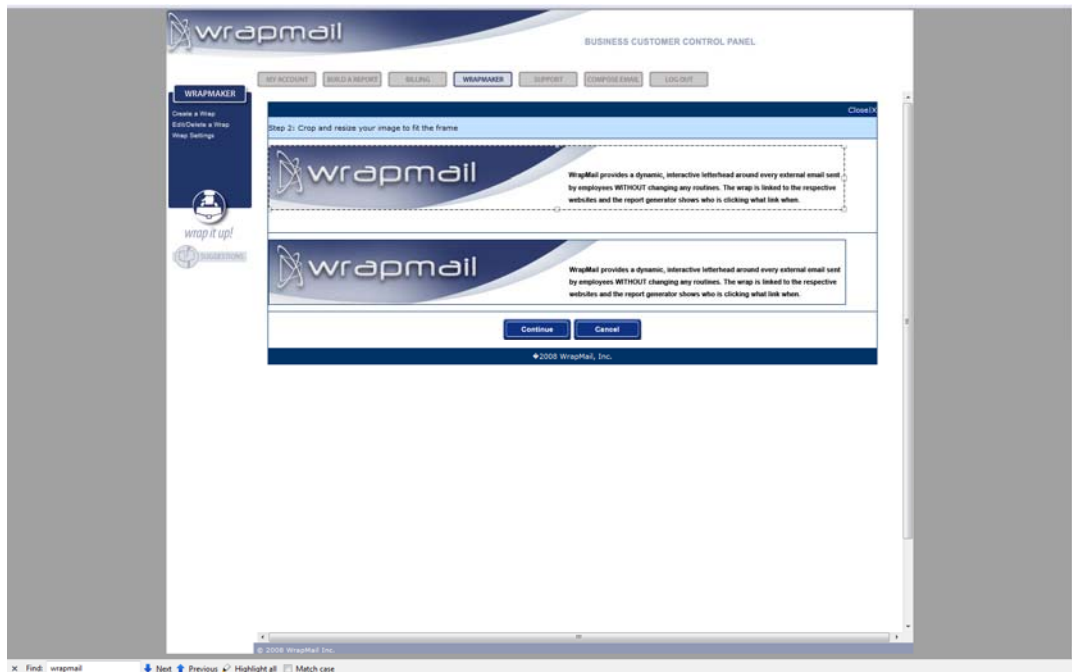
THE MAIN THING TO REMEMBER IS TO HAVE IMAGES SAVED ON YOUR COMPUTER THAT FITS THE SIZE OF THE RECTANGULAR ELEMENTS OF A SHELL – ALL SIZES ARE LISTED INSIDE THE RECTANGLES.

Simply click on any rectangle to see the next screen:



Click “Browse” and find your image and click “Upload”.

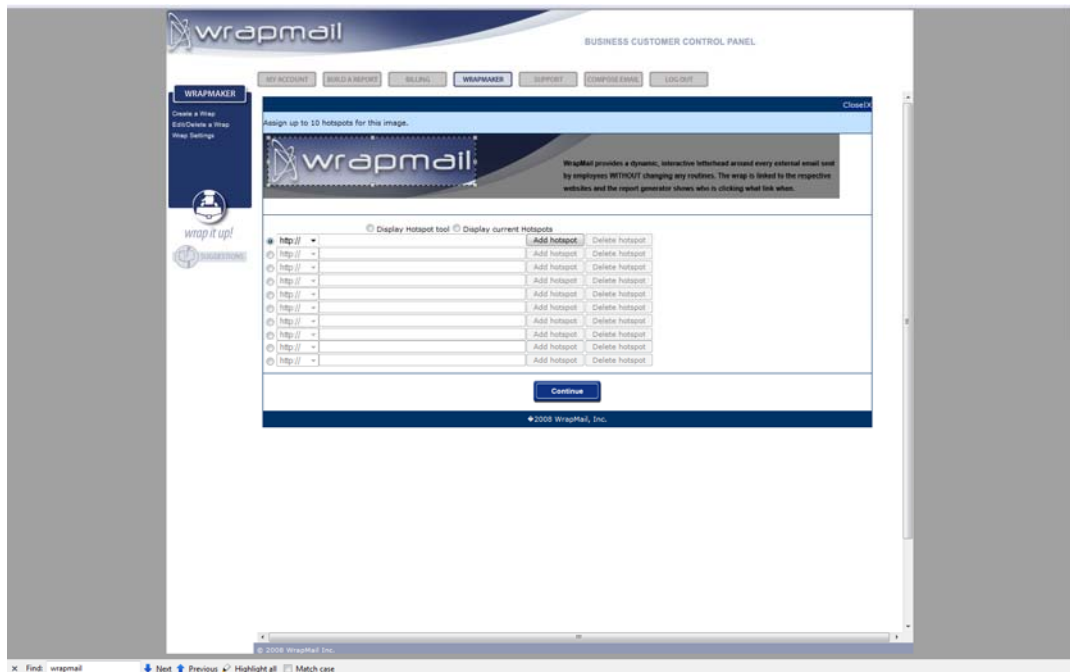
After you have uploaded your image click on “Continue” to see this screen:



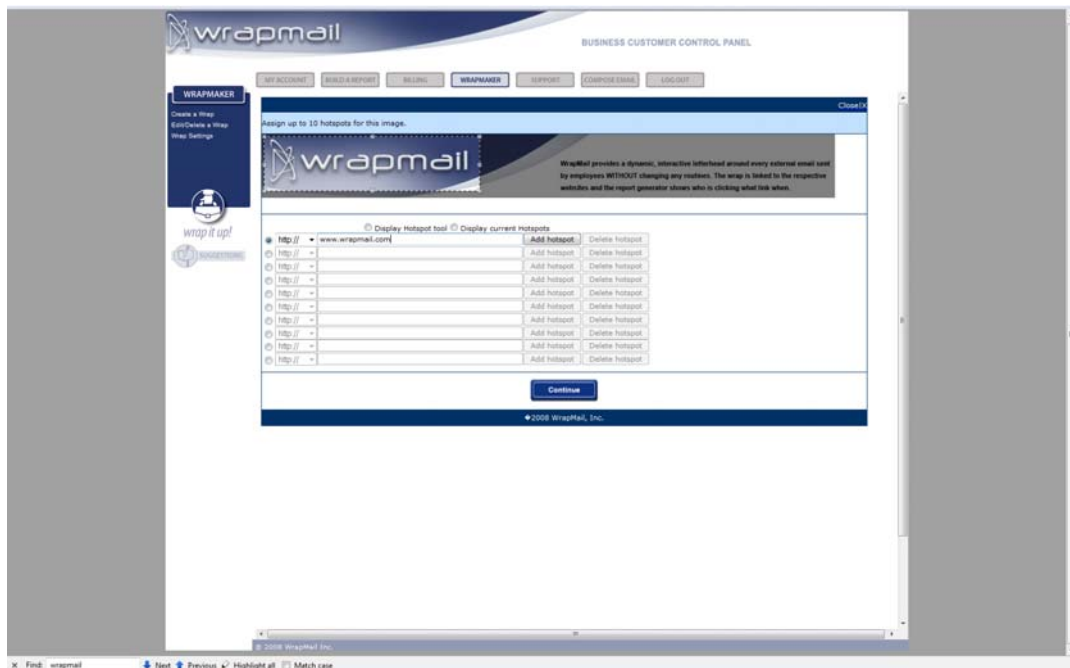
Here you have the option to crop the picture IF it is larger than the rectangular box, click “Continue” to see:



Now give the wrap a file name where it says “Name your Wrap”. Now click on “Add link http://”



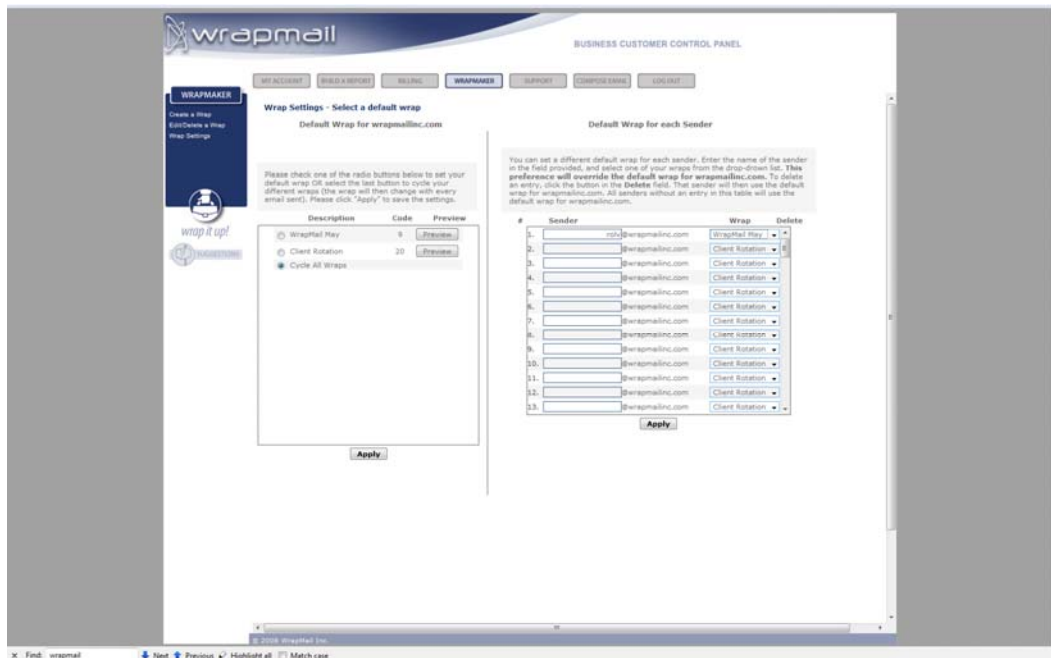
Bring your cursor over the picture and you'll see it turning to "crosshairs", hold down the left mouse-button and you can now select an area where you want to place a link. Release the button.



Now click the first radio button and type in your link. Note that you can change from http to https by clicking the down-arrow. Click on add hotspot. To create more links in the same image repeat this procedure. Note that hotspots can also be deleted. Now go to add another picture and links.



When you are done adding pictures and links (if you leave a rectangle empty then that's fine, there will then be nothing there when your emails arrive. Click on "Save" and you just made your first wrap.



Now click on "Wrap Settings" in the left menu and you can set your wrap as default by clicking the radio button next to it or you can "Cycle" wraps if you have more than one. You can also, on the right side of the screen, set specific wraps for specific senders.

Other features:

- Select which wraps to rotate
- Change wraps based on recipient
- Add 3rd party advertising to wraps – could be automated
- Change wrap based on subject line
- Change wrap based on a time-factor
- Embed questioner/research form